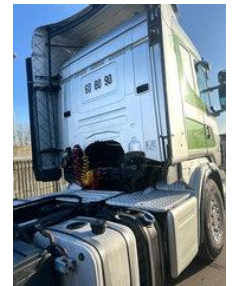


Scania G420 Spoiler/Retarder/PTO/Adblue

General characteristics

Brand	Scania
Model	G420
Subcategory	Cab over engine
Meter reading	1.014.159km
Year of construction	2011
Date of first registration	17-03-2011
Colour	Gray
Condition	Used
General state	Very good
Fuel	Diesel
Emission class	Euro 5



Properties

Cabin

Sleeping cabin

Scania G420 Spoiler/Retarder/PTO/Adblue

Technical specifications

Number of axes	2
Axis configuration	4x2
Assets	420hp

Accessories

- Automatic
- Bluetooth
- Front window
- Navigation
- Metallic paint
- Radio/Cd/Audio system
- EBS
- Climate control
- Intarder
- Retarder
- Heater
- All wheel drive
- Alarm
- ASR (Anti-Slip Regulation/Traction Control)